

LEGEND

0 1 2 MILES

- Class A Groomed Snowmobile Only Trails
- Corridor Snowmobile Only Trails
- Class B Snowmobile Only Trails (may or may not be groomed)
- ATV Trails & Routes
- Brown ATV Marker-Funded ATV Trails
- Black ATV Marker-County Logging Road
- Open for ATV use
- ATV Temporary Route
- County Managed Lands
- State Managed Lands
- Federal Managed Lands
- Township Boundary
- LCO Reservation Boundary
- Trail Corridor Numbers
- Snowmobile Trail Numbers
- ATV Route Numbers
- Intersection Numbers
- Memo Board
- Business Location
- Business Location with Gas
- Gas Station
- Restroom
- Trail Does Not Connect
- Gas Station
- Restroom

This map is prepared with information supplied to us by others, therefore, the Sawyer County Snowmobile and ATV Alliance, Advance Printing and Advertisers assume no liability as to trails (temporary included), markers, or individuals. Please respect private and trespassing signs. Stay on trails.

Use extreme caution on lakes and streams - Obey all state laws and local ordinances - Do not operate snowmobiles on state highways or county roads - NOTICE: ADVANCE PRINTING AND ADVERTISERS ASSUME NO LIABILITY AS TO TRAILS (TEMPORARY INCLUDED), MARKERS, OR INDIVIDUALS. PLEASE RESPECT PRIVATE AND TRESPASSING SIGNS. STAY ON TRAILS.

Join Your Local Club Affiliation

- BBR Birchwood Bobcat Riders
- LT Loretta Trailblazers
- MS Musky, Sno & ATV Country
- NCR North Country Riders
- SM Sno-Mads Members
- ST Sno-Trails Members
- REATV Radisson-Exeland ATV
- WH Winter Huskies
- 4WW 4-Wheel Warriors
- NRR Northwest Relic Riders

- 1 Big Bear Lodge LT
- 2 Flambeau Forest Inn & Motel LT
- 3 North Country's Hardwood Cafe LT
- 4 Motel and Lounge LT
- 5 Ocho Motel LT
- 6 Eagle's Lodge Resort & Campground WH
- 7 Fisher's Trip-Fun Motel WH
- 8 The Loretta Steakhouse WH
- 9 Winter Nights Cottages WH
- 10 Trout Fish Lodge WH
- 11 Chippewa Valley Bank WH
- 12 Bunkhouse Motel WH
- 13 Winter Co-op WH
- 14 Patty's on 70 Bar & Grill WH
- 15 All Mechanical Storage MS
- 16 Winter Northern Lights Motel WH
- 17 Rustic Lodge WH
- 23 Phillips 66 Food Mart WH ▲
- 24 Deer Run Resort MS
- 25 Park Island Resort SM
- 26 Musky Tale Resort WH
- 27 Deerport Lodge & Resort MS
- 28 Wannigan WH
- 29 The Landing ST
- 30 JB's Moose Lake Shack MS ▲
- 31 Spider Lake Motel & Suites SM
- 32 Blueberry Lake Motel MS
- 33 Johnson's Resort MS
- 34 Louie's Landing Resort MS
- 35 Reel Livin' Resort MS
- 36 Lost Land Lake Lodge MS
- 37 Don's Corner SM
- 40 Pia-Mor Bar & Restaurant SM
- 41 Twin Lakes Tap SM
- 42 Family Hooper Bar & Tackle MS ▲
- 43 Wheel Inn MS
- 44 Black Iron Bar & Grill SM
- 45 Hayward Power Sports MS ▲
- 46 Boulder Lodge MS
- 47 Sawyer's Four Seasons Resort SM
- 48 Powell's On Round Lake MS
- 49 Oak Shores Resort ST
- 50 Ghost Lake Lodge MS
- 51 Amm's Evergreen Tavern SM
- 52 Park Bayview Resort MS
- 53 Lakewood MS ▲
- 54 Chief Lake Lodge ST
- 55 Patti's Landing ST
- 56 Revell's Resort SM
- 57 Shady Brook Resort MS
- 60 The Dock NRR
- 62 Ramer Small Engine SM
- 63 Burtwood Resort REATV
- 64 Treeland Resorts MS
- 65 Lumberjack Inn ST
- 67 Chippewa Pines Resort REATV
- 68 D.J. Mart #1 REATV ▲
- 69 Price Ridge ST
- 70 Angler's Haven ST
- 71 DJ Mart #2 ST
- 72 Beechcroft ST
- 73 Stone Lake Pub ST
- 74 Redwoodhills Winery NRR
- 75 Chit Chat Bar, Grill & Resort BBR
- 76 Spider Lake Saloon BBR
- 77 Farm Boyz Mercantile NRR
- 79 Somewhere Else Bar & Grill ST
- 80 Fred Thomas Resort BBR
- 81 Sisk's ST
- 82 Wurzer's Limestone Resort BBR
- 83 Northwoods Small Engines MS
- 84 Bear Paw Resort BBR
- 85 Sportman's Lodge Bar & Grill BBR
- 86 The Boulevard ST
- 87 Trails End ST
- 88 Bern's NRR
- 89 LCO Quick Stop ST
- 90 Arctic Sports BBR
- 91 Arctic Sports BBR
- 92 Birchwood American Legion BBR
- 93 Stone Lake Powersports ST
- 94 Summit Lake Game Farm REATV
- 95 Wurzer's Sunset Resort BBR
- 96 Birchwood Motel BBR
- 97 Mama Rogge's Rattleside Bar & Grill BBR
- 98 Kreyer's Candy & Supplies ST
- 99 The Steakhouse & Lodge ST
- 100 The Birchwood Cafe BBR
- 101 Flat Creek Inn SM
- 102 Coop's Pizza SM
- 103 TNT's Sports Bar and Grill NCR
- 104 Angler's Bar & Bites SM
- 105 Big Fish Golf Club ST
- 106 West Wilderness NCR
- 107 Cenex SM
- 108 Northwoods LRT & Dock BBR
- 109 Big Musky Resort & Motel ST
- 110 Adventure RV & Powersports NCR
- 111 OC Sporting Goods NCR ▲
- 112 Sealey Sawmill Saloon SM
- 113 Sevenwinds Casino ST
- 114 L.M. & M. Feed Supply SM
- 115 Hayward Lakes Visitors & Convention Bureau ST
- 116 Hayward Veterans Community Center NCR
- 117 Christina Y Pine MS
- 118 Pine Ridge BBR
- 119 Virgin Timber Resort WH
- 120 R3 Racing NCR
- 121 Reel Deer Lodge & Resort MS
- 122 Nelson Lake Landing SM
- 123 Nelson Lake Lodge SM
- 124 Schumuck's Trailside Retreat REATV
- 125 Helging's Bar WH
- 126 Runamak Riders Hayward SM
- 129 Lynn's Custom Meats & Catering SM
- 130 Louie's Bar & Bites SM
- 141 Phipps Tavern Gentlemen's Club NCR
- 142 Full Throttle Sports BBR
- 143 Hayward KOA Holiday NCR
- 144 Holiday Inn Express SM
- 145 Wayside Sports Bar & Grill SM
- 146 Hillman's Corner Store NCR
- 152 Woodhaven Resort NRR
- 153 Rusty Hook Saloon & Smokehouse ST
- 154 Ranch Supper Club SM
- 156 Exeland Depot REATV ▲
- 157 Rock Castle Bar REATV
- 158 The Buckhorn REATV
- 159 Cedar Lodge WH
- 174 Wild River Sport & Marine ST
- 175 Paul's Pizza Den BBR
- 176 Long Lake Bar & Tackle & C Store BBR
- 189 DO Grill & Chill ST

Over 600 miles of groomed trails
For Trail Information
1-800-724-2992
www.haywardlakes.com

HAYWARD INSET

STONE LAKE INSET

BIRCHWOOD INSET

WINTER INSET

REMEMBER! RED LINES on the map are for snowmobile trails/routes and PURPLE LINES on the map are for ATV/UTV trails/routes. ATVs are not allowed on snowmobile trails that don't show a Purple line.

2023-24 TRAIL MAP
SAWYER COUNTY SNOWMOBILE & ATV ALLIANCE
 Powered by Volunteers

The purpose of this map is to show the ATV/Snowmobile Trails and the ATV Routes that connect to businesses.

Township rules change regularly and the Alliance is not putting legal ATV roads on the map. Roads must be properly signed as a route to be open. Please contact your local town officials with any questions. Please stay on Marked Snowmobile/ATV Trails when riding.

Most ATV trails are open all year round, but some are closed at certain times.

- Toscoaba Trail #10 is closed to ATVs from Angus to the Wild River Trail. From Birchwood to Price County Line it is closed from Nov. 15 to Dec. 15. From Price County Line to Park Falls it is closed from Nov. 15 to April 15
- Flambeau Forest Trails #36 and #25 are closed to ATVs from Nov. 15 to May 15
- Trail #31 from Trail #10 to City, F is closed to ATVs from Oct. 15 to Dec. 15

POWELL'S
 ON ROUND LAKE

9971 N Grand Pines Lane Hayward, WI 54843 (715) 915-1111

- Open Year-Round
- Check website for current hours
- Full Service Bar and Restaurant
- Large Craft Tap & Wine Selection
- All day Friday Walleye Fish Fry
- Saturday night Prime Rib
- Appetizers, Gyros, Burgers and more

Louie's Landing Restaurant on Moose Lake

FULL MENU & BAR FEATURING:
 Prime Rib, Char-Grilled Steaks & Chops, Seafood, Broasted Chicken, Specialty Sandwiches, Burgers, Homemade Soups, Premium Cuts, Bar, Boat Landing

OPEN 6 DAYS A WEEK IN SNOWMOBILE SEASON
 OPEN 10:00 A.M. - CLOSED MONDAYS - ON TRAILS #21 & #31
 1099N Louie's Landing Rd • 715-462-3300
<http://louieslandingrestaurantintwocities.com>

RIDE • REST • REFUEL

SEVENWINDS CASINO

TRAIL #30

Treeland Resorts
 ON THE CHIPPEWA RIVER

LODGING 365 DAYS A YEAR!
 715-462-3874 | treelandresorts.com

RESTAURANT OPEN SEASONALLY!
 May 1st - October 15th - 7 Days/Week
 December 26th - March 5th
 Thurs - Sat 11am - Close Sun 11am - 3pm
 GREAT FOOD - HOT & COLD DRINKS - PREMIUM GAS

4-B's MOOSE LAKE STEAK

LOCATION: 10949 N County Hwy S Hayward, WI 54843
 PHONE NUMBER: 715-462-9790

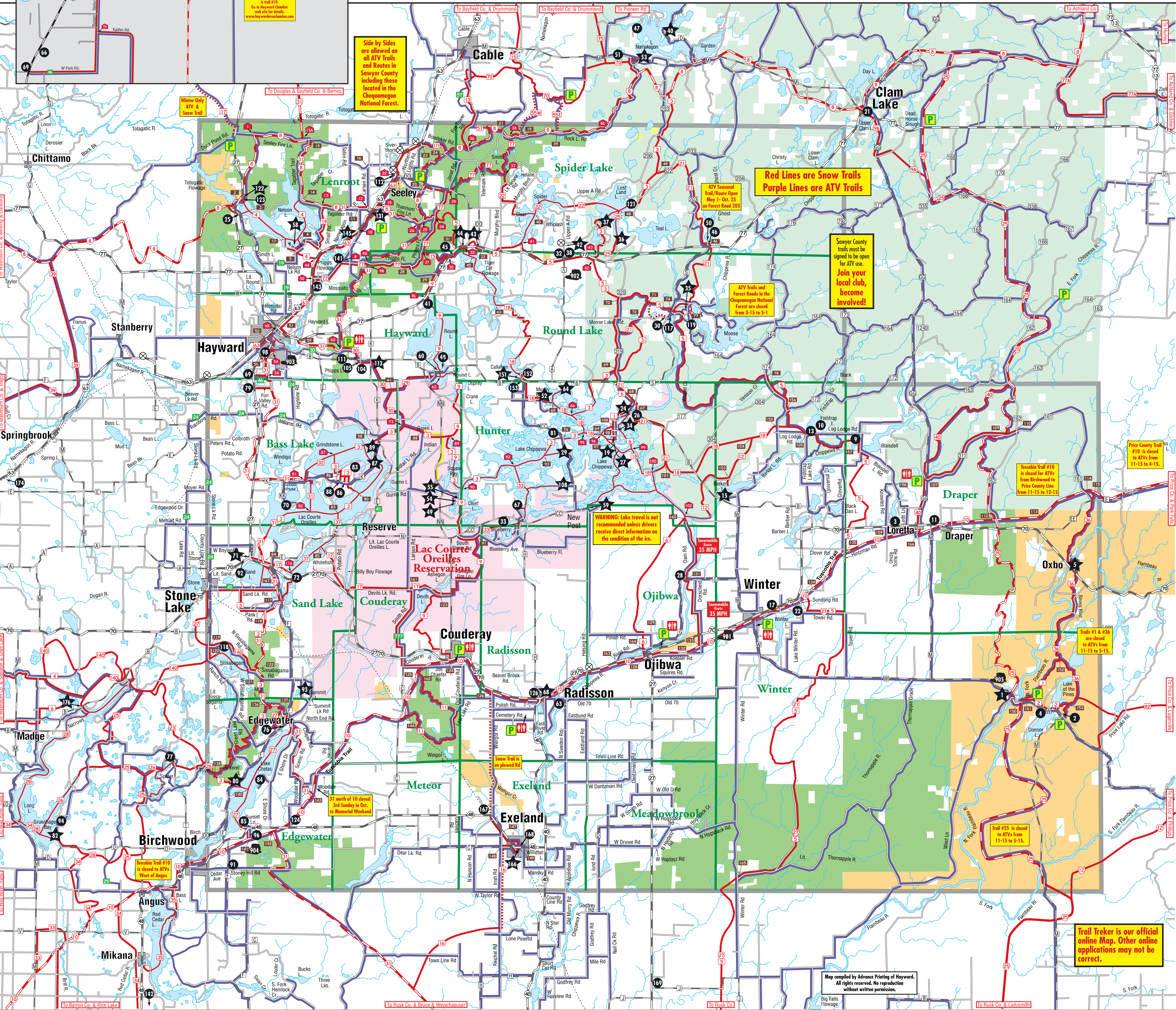
CHEERS! WE ARE OPEN!
 RIGHT OFF TRAIL #5

We are on the trail!
 Gas, Food, Drinks & Memories

Summit Lake Grille

PREMIUM GAS
 Friday Fish Fry

Seasonal hours and information at summitlakegamefarm.com
 715-354-7241



The Rustic House
 ESTABLISHED 2017

Friday Fish Fry
 Saturday Smoke Prime Rib
 WEEKLY SPECIALS 715-462-4031

LOCATED ON THE CORNER OF HWY B & CC TRAIL #18

HAYWARD POWER SPORTS

SALES • PARTS • SERVICE • RENTALS

10 MINUTES EAST OF HAYWARD ON HWY. 77
 715-462-3674
HAYWARDPOWERSPORTS.COM

Information Center Sawyer County

Contact us for:

- Trail Reports • Snow Conditions
- Weekly Fishing & Outdoor Report
- Calendar of Events
- Lodging Availability

HAYWARD LAKES
 Visitors and Convention Bureau
www.haywardlakes.com • 715-634-4801

Chippewa Pines Resort

ALL WATERFRONT CABINS
 FULL BAR • OPEN YEAR ROUND

Level Grounds • Private Piers • Sand Beach
 Live Music • Pontoon, Boat, Rentals, Kitchen

ATV CHIPPEWA PINES RESORT SNOWMOBILE

7230N Sandy Point Rd. • Couderay, WI 54828
 715-945-2776 • www.chippewapines.com
 Keith & Robyn Freel

Patti's ON 70
 BAR & GRILL PLUS MOTEL

Located Right on the Tussock Trail!
 Welcome ATVs & Snowmobiles
 Serving Breakfast Wed-Sun!
 Open at 11:30 AM Mon - 6 AM Wed-Sun
 Closed Tues

715-266-6401 • Hwy 70 • Winter, WI 54896

Adventure RV & Powersports

SALES, SERVICE & PARTS

Adventure RV and Powersports of Hayward
 15619 US Hwy 63 • Hayward, WI 54843
715-934-3273

EAGLE LODGE

Check us out on Trail #1

Open weekdays at 3 p.m. and weekends at noon

SERVING PIZZA

Cabins open year-round, Campgrounds open May 15-Nov 15

www.eaglelodgeresort.com • 715-266-5433
 4670 W. Sweitzer Rd, Loretta, WI 54896

BUCKTAIL LODGE

Winter, Wisconsin
Full Liquor Bar • Restaurant
4 Season Cabins
Premium Gas

Open 7 Days a week 11AM-11:30PM
 Off of Trail 12 • (715) 266-8013

HILLMAN'S CORNER STORE
 CALLAHAN

Stop by for
 GAS...GROCERIES...
 BEER...LIQUOR...ICE...
 DELI MEAT & CHEESE...
 FRESH COFFEE...TOBACCO

715.462.3371

In Case Of Emergency:

Sawyer County Sheriff	911
Washburn County Sheriff	911
Bayfield County Sheriff	911
Rusk County Sheriff	911
Barron County Sheriff	911

Non-Emergency:

Sawyer County Sheriff	715-634-5213
Washburn County Sheriff	715-468-4720
Bayfield County Sheriff	715-373-6120
Rusk County Sheriff	715-532-2200
Barron County Sheriff	715-537-3106

Call For Trail Conditions or Questions

Hayward Lakes Visitors & Convention Bureau
 715-634-4801
 1-800-724-2992
www.haywardlakes.com

Sawyer County Forest
 715-634-4846

Chequamegon National Forest
 715-634-4821

Hayward Power Sports
 715-4623674

Flambeau State Trail
 715-332-5271

Over 600 miles of groomed trails

For Trail Information
1-800-724-2992
www.haywardlakes.com

SAWYER COUNTY SNOWMOBILE & ATV ALLIANCE

Map compiled by Advance Printing of Hayward. All rights reserved. No reproduction without written permission.

Big Falls Flowage

Trail Troker is our official online map. Other online applications may not be correct.